

# Microsoft Ignite 2024

Vervolg sessie

Infrastructure



**valid**

Thrive  
Tech  
Trust

# Agenda

- Introduction
- Azure Local
- Windows Server 2025
- Q&A



# Introduction



Ralph Zeegers  
Portfolio Manager



Rob Pijpers  
Solution Architect



Ramon Camp  
Solution Architect



03-12-2024



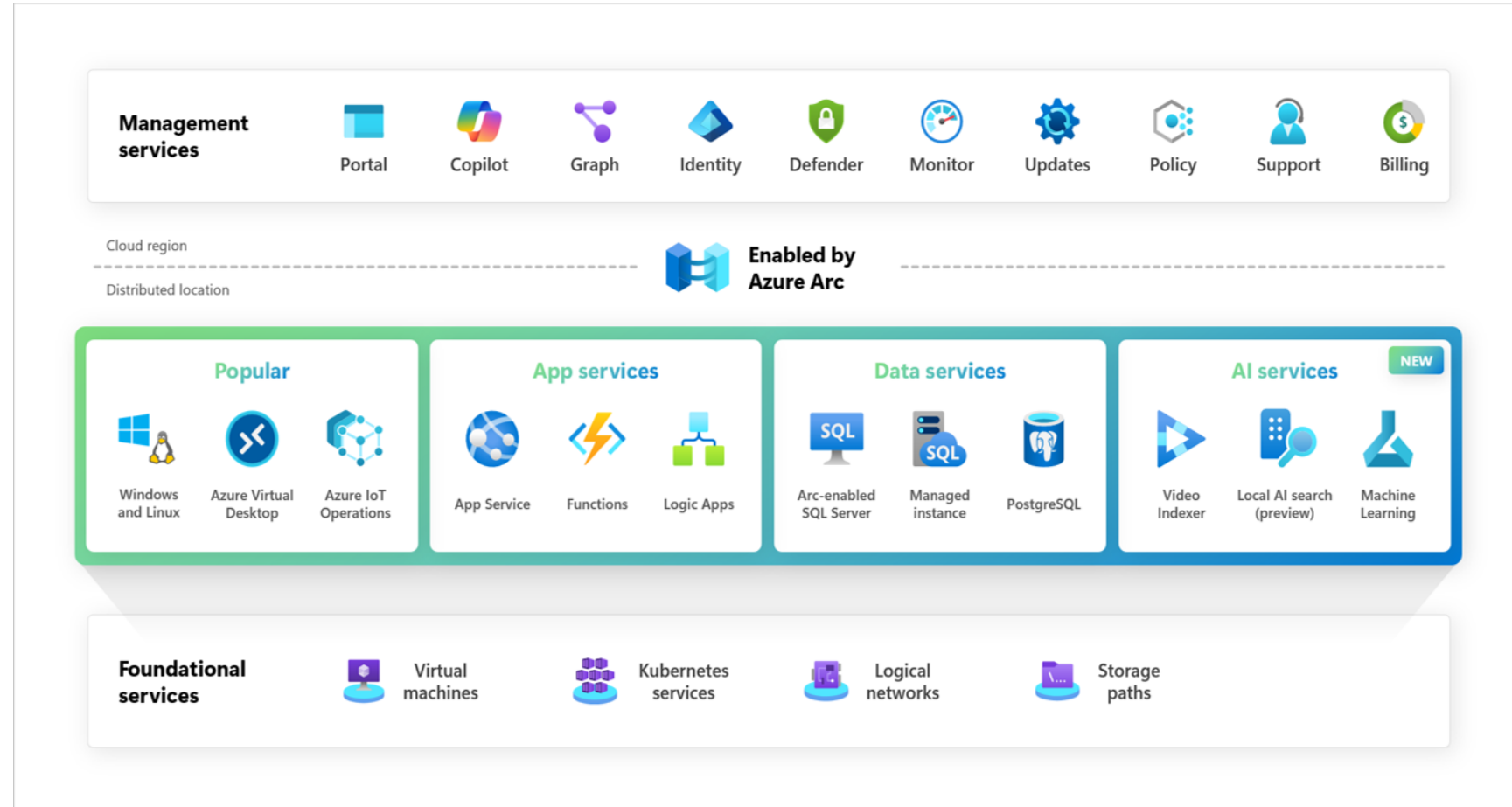
Thrive  
Tech  
Trust



# Azure Local

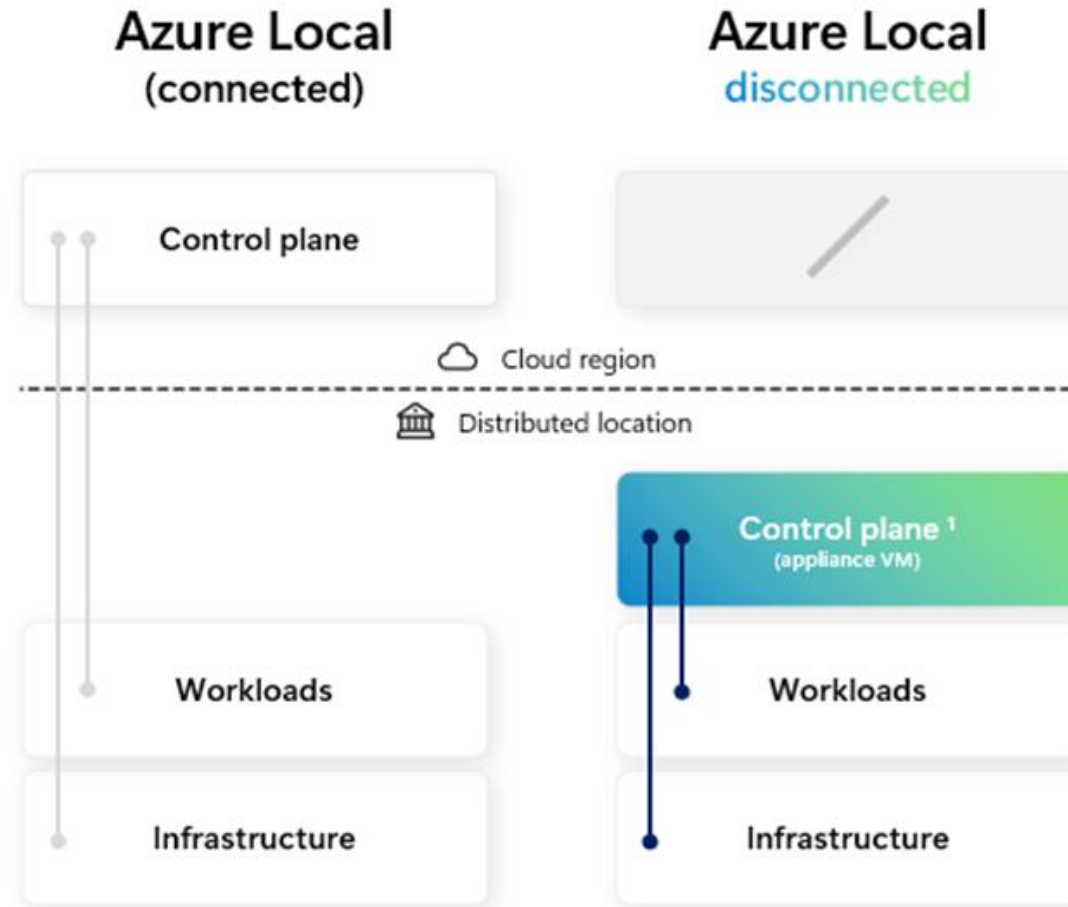
# Azure Local Features (GA)

- Unified Management
- Compute and Storage
- Azure Kubernetes Service (AKS)
- Security
- High Availability.



# Azure Local Features (Preview)

## Disconnected operations



# Azure Local Features (Preview)

## Migrate from VMware to Azure Local



Reduce your VMware costs and footprint with full-stack alternative



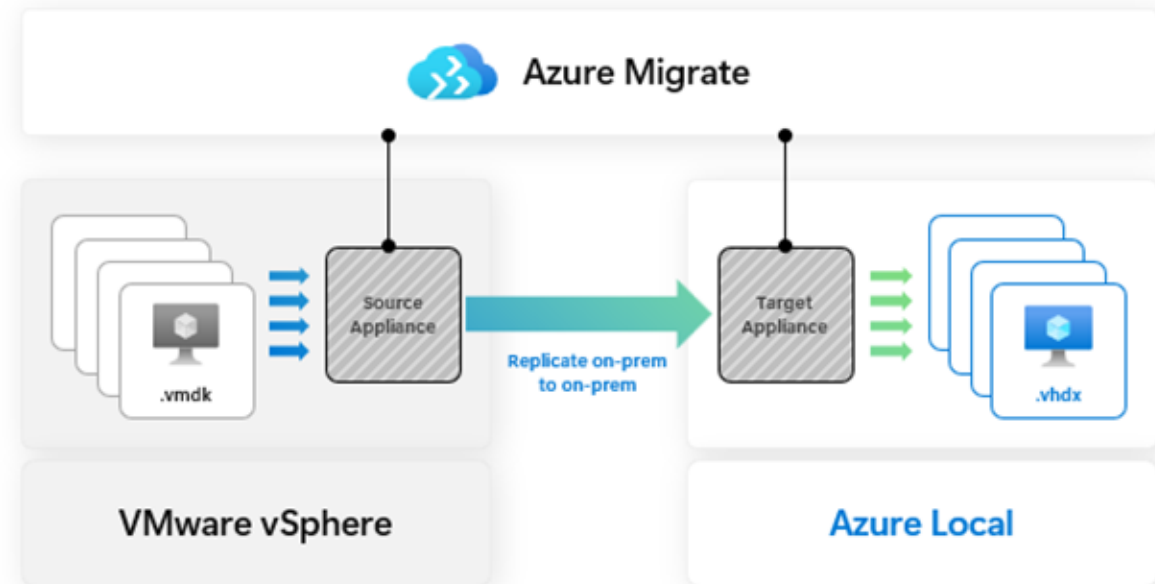
No need to change/rewrite apps



Copy and convert VMware VMDK to Azure Arc VM entirely on-premises



Guided workflow in Azure Migrate



# Azure Local Features (Preview)

- Azure Local without Active Directory
- Network segmentation
- Trusted launch





# Azure Local pricing

Instance	Timing	PAYG	AHUB
Azure local	Monthly service fee	€10 per physical core/month	€ 0 per physical core/month
Azure Kubernetes Service (AKS) enabled by Azure Arc		Included with Azure Local, 2402 release and later	Included with Azure Local 2402 release and later
Windows Server subscription (for guests)	Monthly service fee	€22,20 per physical core/month	€ 0 per physical core/month

# Azure Local releases

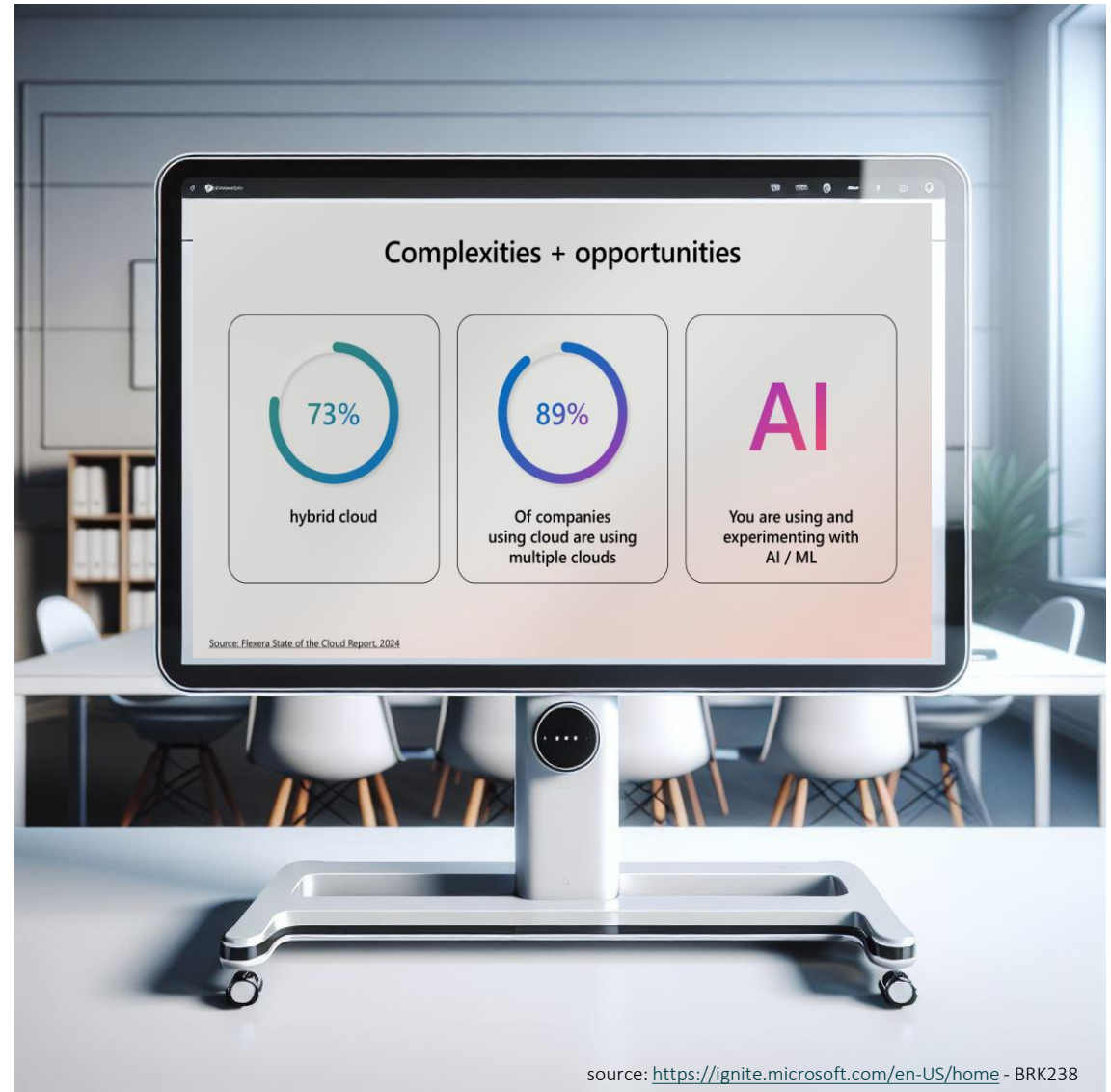
- Current download version 23H2
- Other releases
  - 2402
  - 2405
  - 2408
  - 2411
  - [What's new in Azure Local, version 23H2](#)



# Windows Server 2025

# Windows Server 2025

- Windows Server 2025
  - Active Directory
- SQL Server 2025
- System Center 2025



# Windows Server 2025

Filter by title

- > Get started with Windows Server
- > Overview
  - > What's new in Windows Server
    - Windows Server 2025**
    - Windows Server 2022
    - Windows Server 2019
    - Windows Server 2016
  - Servicing channels comparison
  - Editions feature comparison
  - Locks and limits
  - Azure Edition
  - Windows Server Pay-as-you-go
  - Windows Server Annual Channel for Containers
  - Hardware requirements
- > Features removed or no longer developed
- Release information
- Extended Security Updates
- Upgrade Windows Server
- > Concepts
- > How-to guides
- > Troubleshooting

Download PDF

## Hotpatch (Preview)

Hotpatch is now available to Azure Arc connected Windows Server 2025 machines when enabled in the Azure Arc portal. Hotpatch allows you to apply OS security updates without needing to restart your machine. To learn more, see [Hotpatch](#).

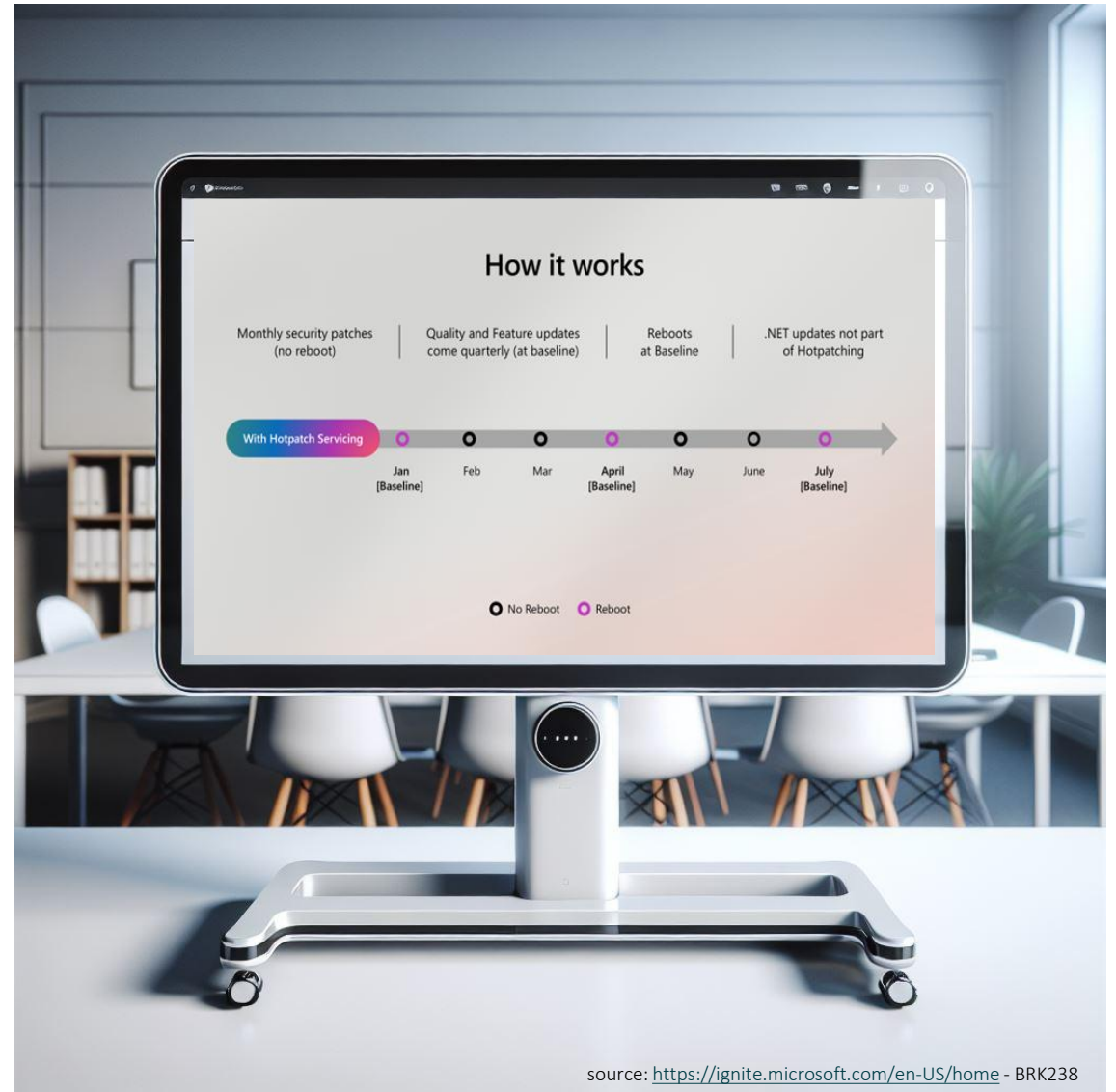
### Important

Azure Arc-enabled Hotpatch is currently in PREVIEW. See the [Supplemental Terms of Use for Microsoft Azure Previews](#) for legal terms that apply to Azure features that are in beta, preview, or otherwise not yet released into general availability.

source: <https://learn.microsoft.com/en-us/windows-server/get-started/whats-new-windows-server-2025>

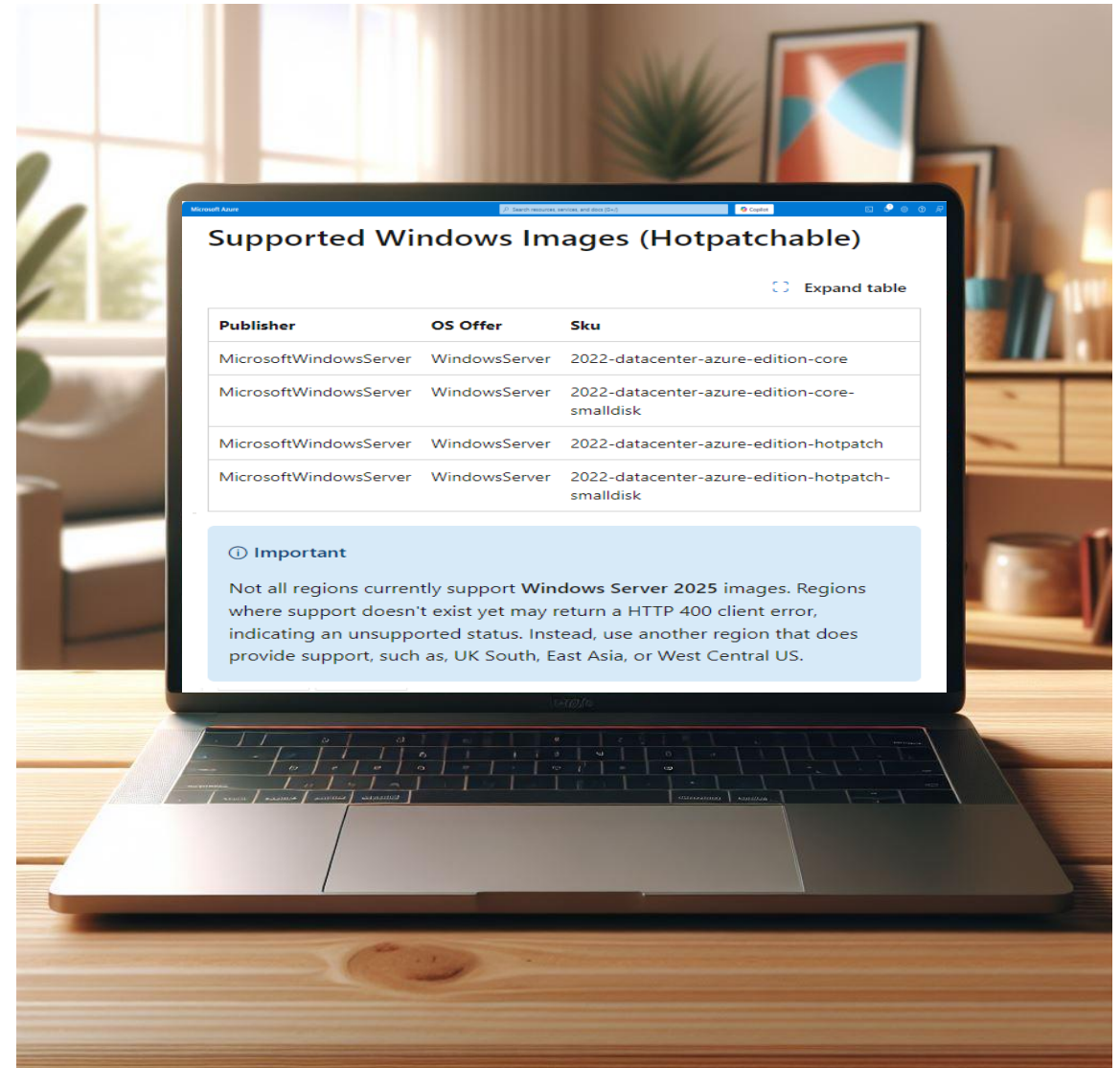
# Hotpatch – How it works

- Windows Server 2022 (Azure only)
- Windows Server 2025 (Cloud & Ground)
- Patch without reboot
- On-premise to Azure Update Manager with Azure Arc
- D-Null patching

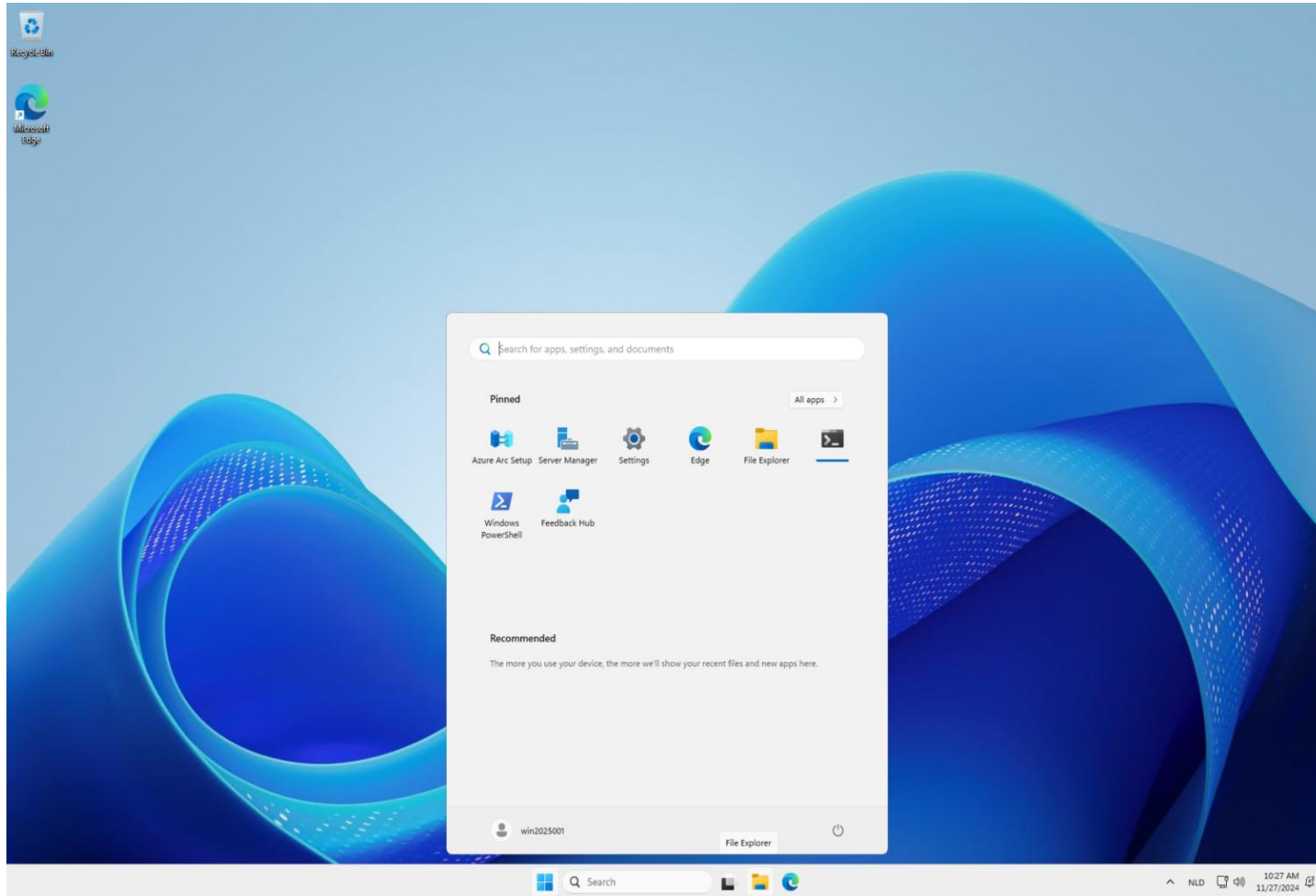


# Hotpatch – Azure VM

- Test in Azure
- Windows Server 2025 – Azure Edition
- Region Availability

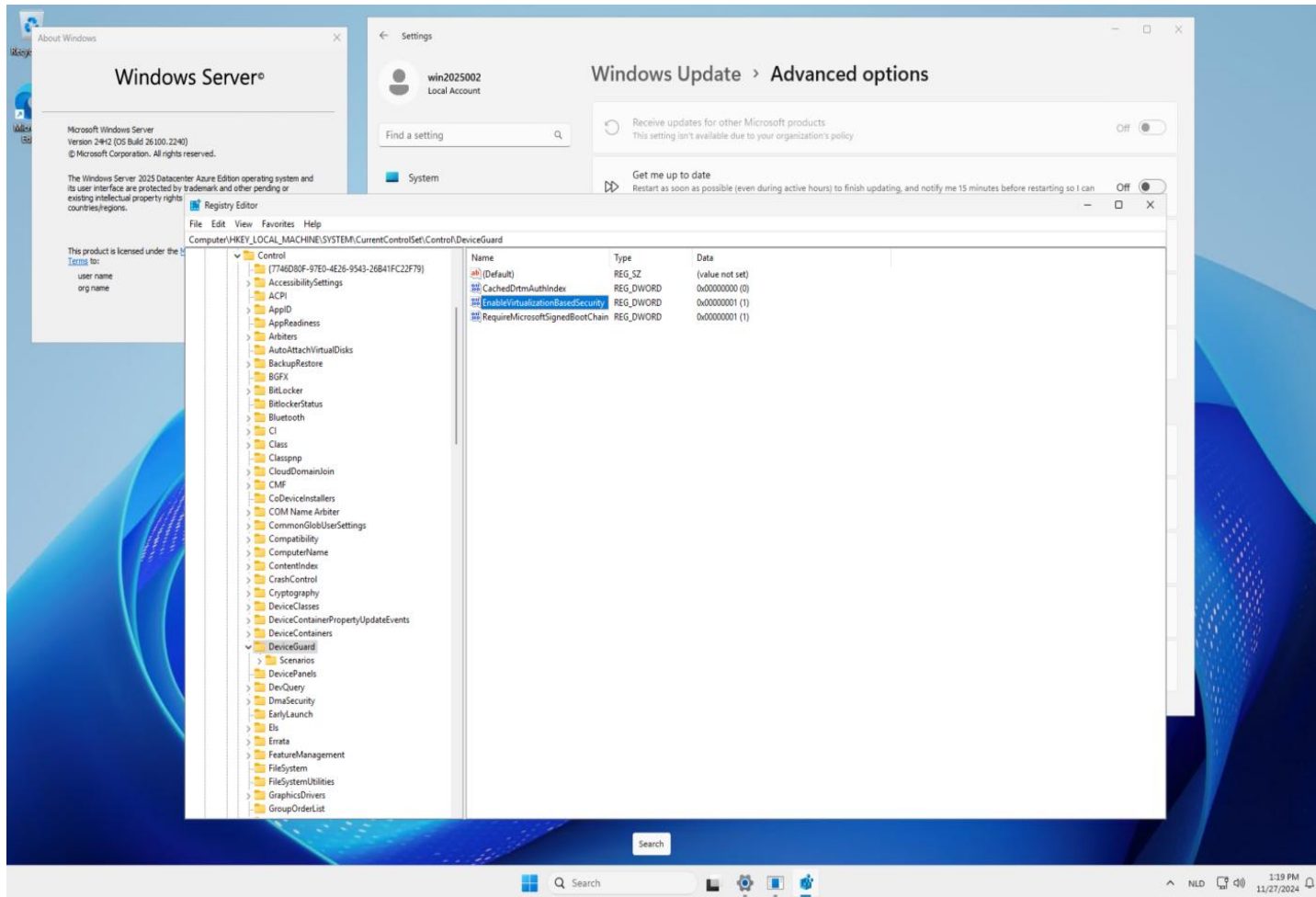


# Hotpatch – Azure VM





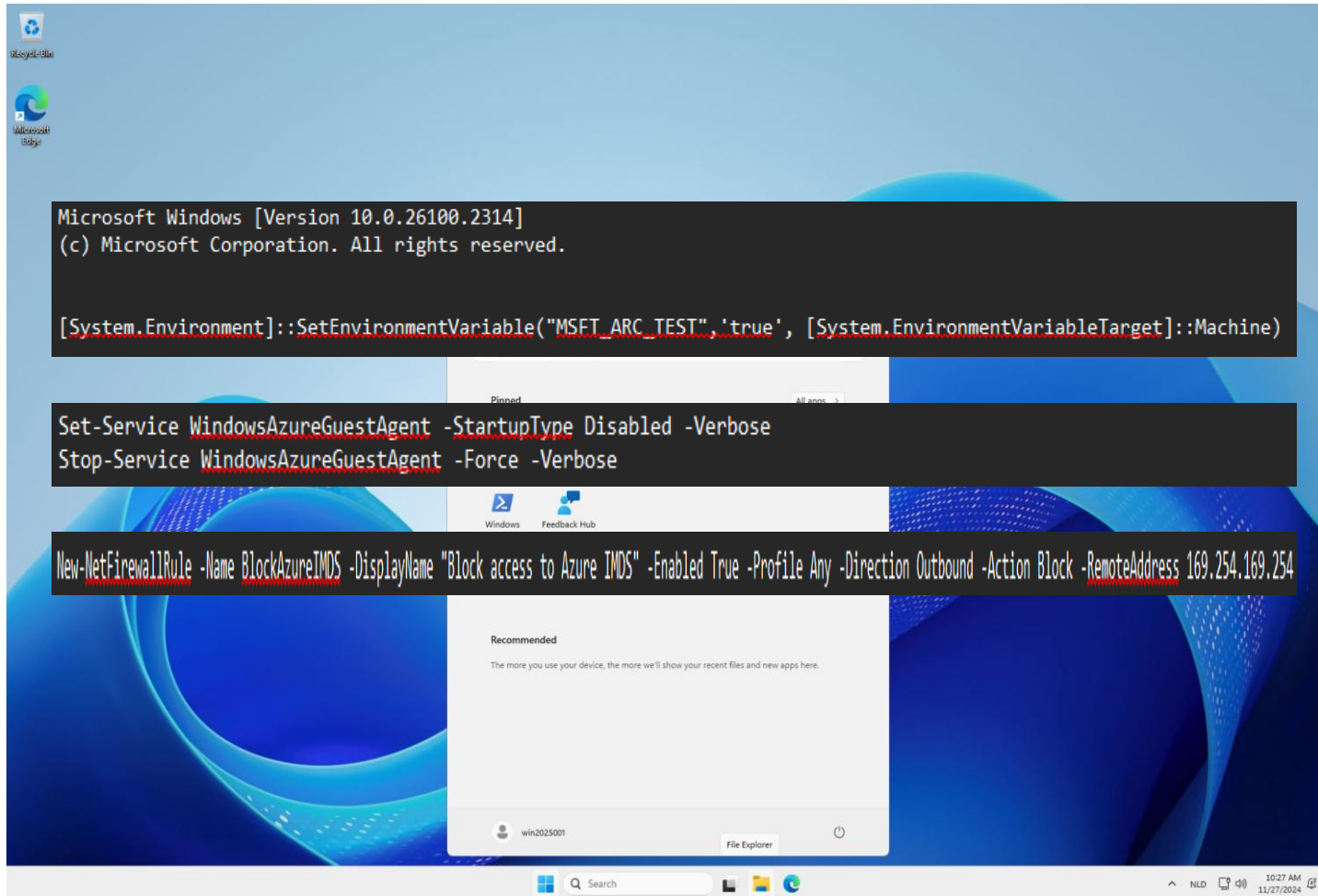
# Hotpatch – Azure VM



# Hotpatch – Azure Arc

- Azure Windows Server 2025
- Evaluate Azure Arc in Azure VM
  
- Enable Azure Arc
- Enable Hotpatch
  
- Patch with Azure Update Manager

# Hotpatch – Azure Arc



# Hotpatch – Azure Arc

The screenshot displays a Windows desktop environment with several open windows:

- Azure Arc Setup:** A window titled "Get Started with Azure Arc" with a "Get started" button and an "Install Azure Arc" button. Below the buttons, it says "Azure Arc connects your server to Azure, giving you fast access to Microsoft's best...".
- Settings:** The Windows Settings app is open to the "Windows Update" section. It shows the user "win2025001 Local Account" and a status of "You're up to date". A "Check for updates" button is visible.
- Windows Update Details:** A sub-window shows "Advanced options" and "Windows Insider Program".
- Windows Server Info:** A small "About Windows" window titled "Windows Server" displays "Microsoft Windows Server Version 24H2 (OS Build 26100.2314)".
- PowerShell Terminal:** An "Administrator: Windows PowerShell" terminal window is open. It shows the command `Reg add "HKLM\SYSTEM\ControlSet001\Control\DeviceGuard" /v "EnableVirtualizationBasedSecurity" /t REG_DWORD /d 1 /f` being executed. Below the command, it lists the usage and available commands for the `winget` utility.

# Hotpatch – Azure Update Manager

Capabilities Recommendations Tutorials

<p><b>Hotpatch (preview)</b> Enroll in Hotpatch to receive monthly security updates without reboots. ✔ Enabled</p>	<p><b>Updates</b> Customize updates for your Arc-enabled server. <a href="#">Enable periodic assessment</a></p>	<p><b>Logs</b> Enable additional monitoring capabilities.</p>
<p><b>Monitoring insights</b> Enable additional monitoring capabilities. ● Not configured</p>	<p><b>Policies</b> View compliance by assigning guest configuration policies to your machine. ● Not configured</p>	<p><b>Change tracking and inventory</b> Enable consistent control and compliance of this machine with Change tracking and inventory. ● Not configured</p>
<p><b>Security</b> Continuously monitor for potential security vulnerabilities and recommendations.</p>	<p><b>Windows Admin Center (preview)</b> Manage your operating system from anywhere — without needing a VPN or other direct connection. ● Not configured</p>	<p><b>Azure Site Recovery configuration (preview)</b> Replicate VMs to Azure to help keep your apps running during planned and unplanned outages. ● Not configured</p>

## Hotpatch (preview) ×

**ⓘ** This Hotpatch subscription has been cancelled. You will have access until the end of your current billing period.

With a Hotpatch subscription, your organization can minimize downtime caused by security updates thanks to smaller and faster installations, fewer reboots, and lowered workload CPU utilization. You'll only be charged for months where reboots are skipped. [Learn more](#)

### Virtualization-based security

VBS is a prerequisite for using Hotpatch. Regardless of enrollment, hotpatches will only be available if VBS is enabled.

VBS Status ✔ On

### Hotpatch

I want to license this Windows Server to receive monthly hotpatches

Resource type	Periodic assessment ⓘ	Hotpatch ⓘ	Patch orchestration ⓘ
-	Select and apply to all <span>▼</span>	Select and apply to all <span>▼</span>	Select and apply to all <span>▼</span>
Azure virtual machine	Enable (current) <span>▼</span>	Enable (current) <span>▼</span>	Azure Managed - Safe Deployment (current) <span>▼</span> ⓘ



**Q&A**